



[Technology Innovation Showcase](#) | [Technology Fall Conference](#) | October 28, 2011

Showcase Title

NAO Robots

Authors/Innovators

Dan Young

Showcase/Innovative Practice Description

The NAO robot showcase will include reasons why the NAO robot is used in academia and how the robot can have a social impact. Recent projects and reports by SUNY Oswego students will be discussed and displayed.



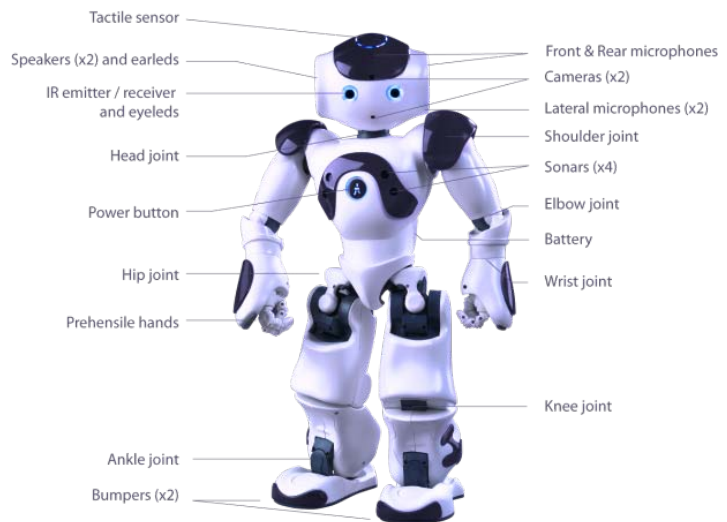
Why Robots?

- ▶ May be able to assist:
 - ▶ Elderly
 - ▶ i.e. , Pol, Juola, Meesters, Weber, Yan, & Wermter (2010)
 - ▶ Persons with autism
 - ▶ i.e. , Barakova & Lourens (2010)
 - ▶ Persons with difficulties understanding others' behavior
 - ▶ Patients and staff in hospital settings
- ▶ How?
 - ▶ Improve emotional understanding
 - ▶ Improve social skills
 - ▶ Have advanced abilities

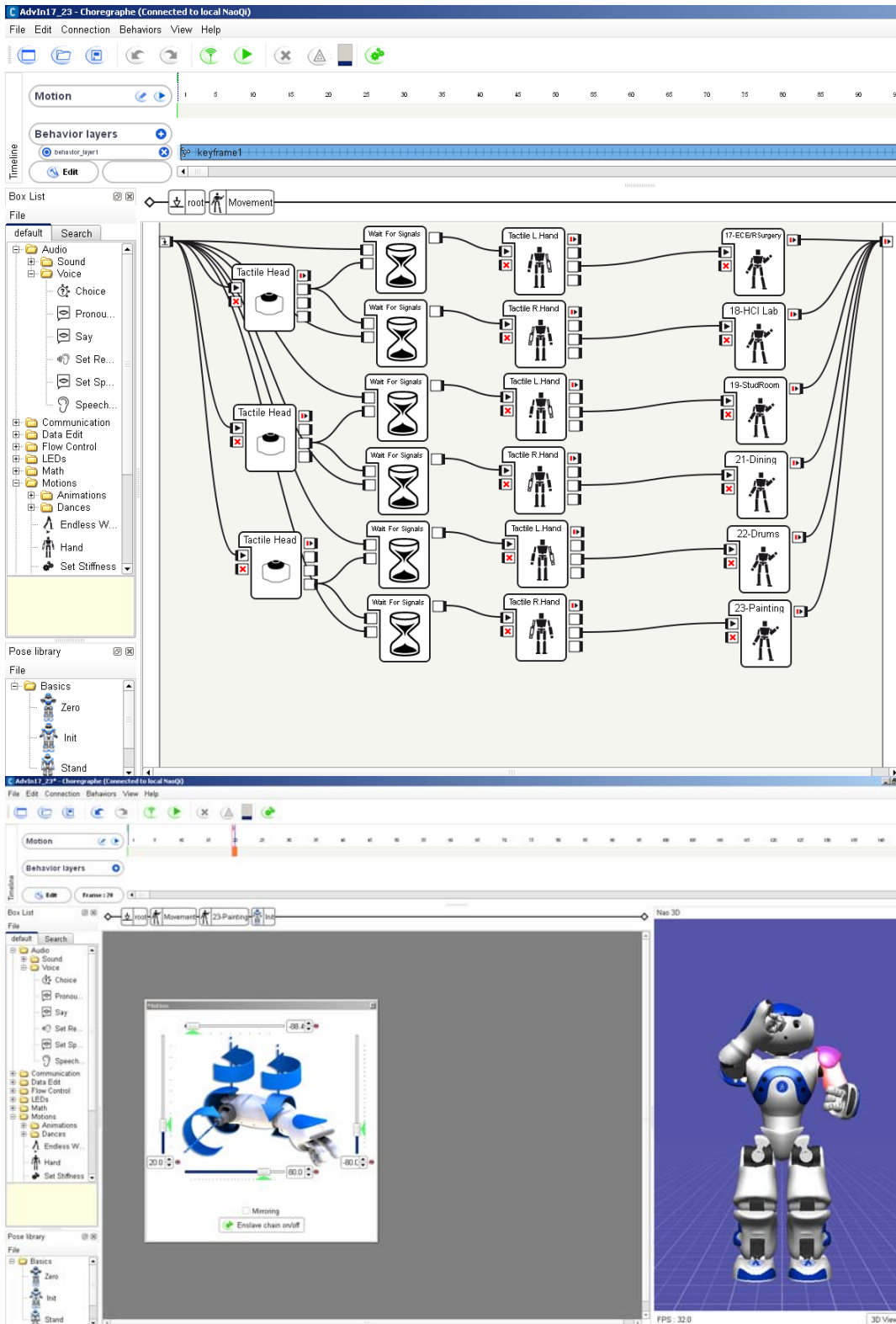


Aldebaran Robotics' NAO

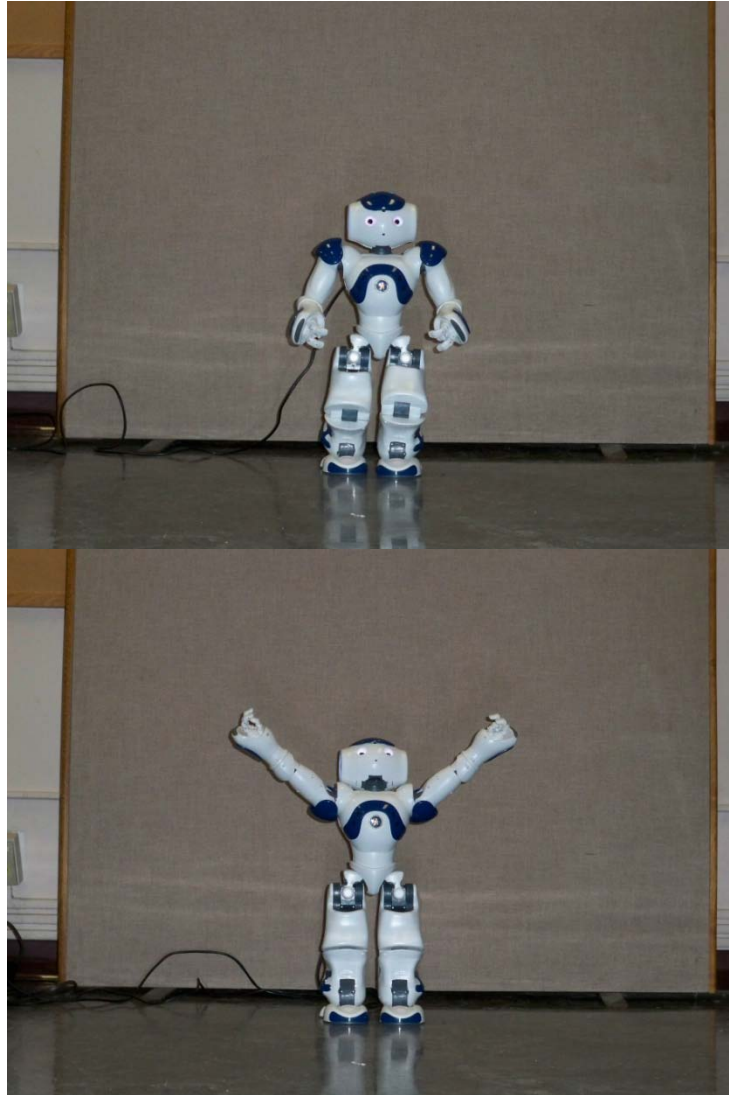
- ▶ Most used humanoid robot
- ▶ Compatible with Linux, Mac, and Windows
- ▶ Highly versatile
- ▶ 25 Degrees of Freedom
- ▶ Verbal Recognition
- ▶ Speech Generation
- ▶ Visual Recognition
- ▶ Movement Generation
- ▶ WiFi



Customization of Movement: Choreographed



NAO Robot Expressing Emotion: Happiness



References

Aldebaran Robotics. (2011). NAO user's guide. Version 1.6.0.

Barakova, E. I., & Lourens, T. (2010). Expressing and interpreting emotional movements in social games with robots. *Pers Ubiquit Comput*, *14*, (457-467).

Pol, D. van der, Juola, J., Meesters, L., Weber, C., Yan, A., & Wermter, S. (2010). Knowledgeable Service Robots for Aging. Version 9. 7th Framework Programme, European Commission.

Young, D. J. (2011). Robot thespians: Acting robots. Human-Computer Interaction: Project 1.

Young, D. J. & Taylor, R. (2011). Robotic and human expression recognition across different groups of emotionally aware adults. *SUNY Oswego Quest 2011*.